

Miller's Murphy Bed

and Home Offices

MURPHY BEDS  
WALL BEDS  
BEDS OVER SOFAS  
BED IN A BOX  
LIBRARY BEDS  
MURPHY BUNK BEDS

MURPHY BOX BEDS

4014 TAMIAMI TRAIL PORT CHARLOTTE, FL 33952  
PHONE: 941-743-(BEDS) 2337 FAX: 941-743-2320  
[www.millersmurphybeds.com](http://www.millersmurphybeds.com)

6528 S. TAMIAMI TRAIL SARASOTA, FL. 34231  
PHONE: 941-960-1403 FAX: 941-203-8538



MURPHY BED AT NIGHT



OFFICE BY DAY

# HELPING YOU AND YOUR GUESTS LIVE THE FLORIDA LIFESTYLE

We support the *Jett Foundation*, Fighting Duchenne Muscular Dystrophy - research and treatment.

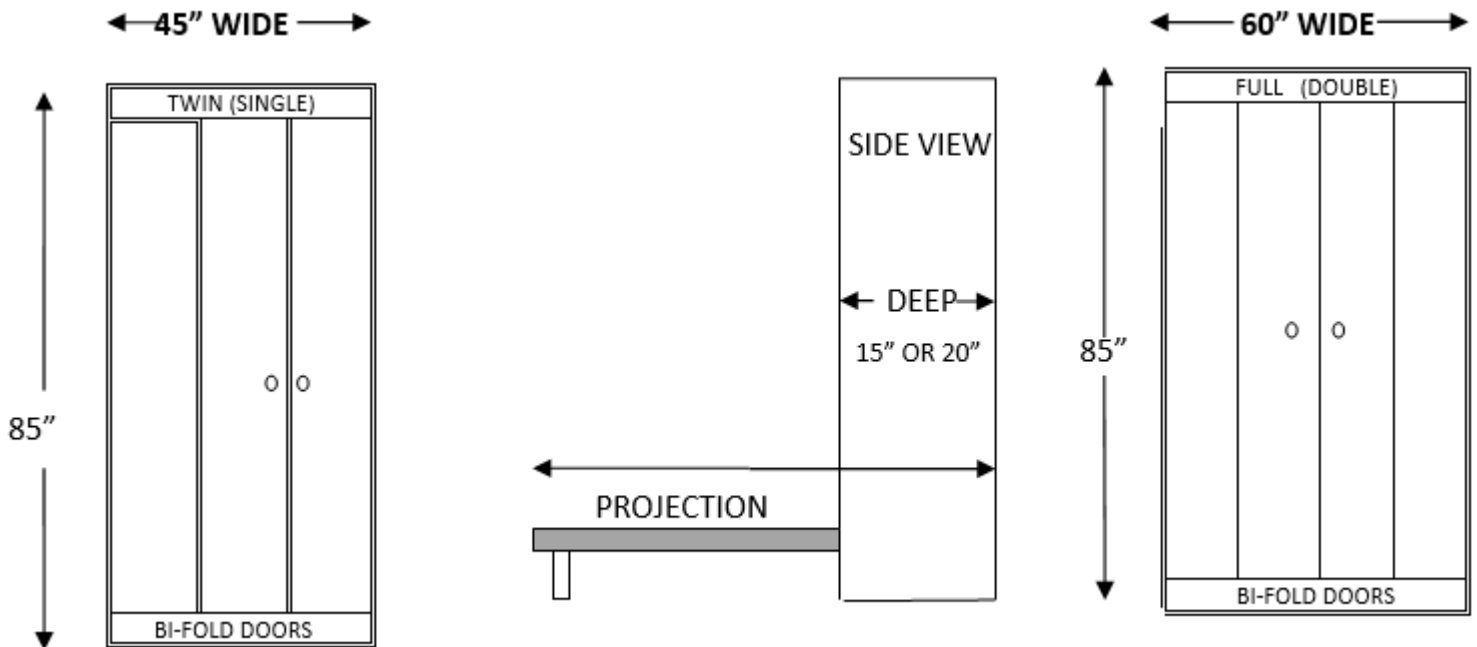


## Murphy bed bi-fold bed cabinet sizes (outside dimensions)

Twin - 45" wide x 85" high x 15" or 20" deep

Full - 60" wide x 85" high x 15" or 20" deep

Queen - 66" wide x 90" high x 15" or 20" deep

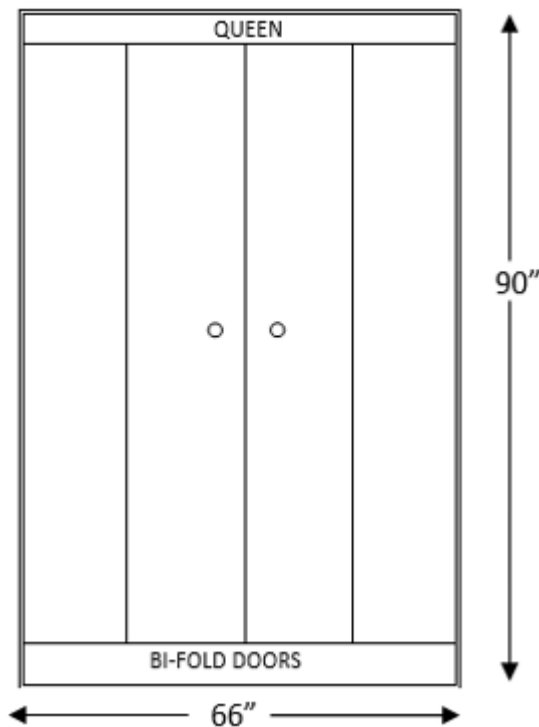


PROJECTION INTO ROOM 85" TO 90" FROM WALL TO FRONT OF BED

PROJECTION OF TWIN BED INTO ROOM WITH A 15" CABINET IS 80" AND 85" WITH A 20" CABINET

PROJECTION OF FULL BED INTO ROOM WITH A 15" CABINET IS 80" AND 85" WITH A 20" CABINET

PROJECTION OF QUEEN BED INTO ROOM WITH A 15" CABINET IS 85" AND 90" WITH A 20" CABINET



The Bi-Fold Murphy bed is a floor-mounted powder coated steel frame.

Counterbalanced with springs for ease in raising and lowering the bed, with self-actuating legs.

Counter balancing is achieved by adding or removing springs until the tension is appropriate for each size bed.

All standard size mattresses fit Murphy beds (No thicker than 10")

MATTRESS SIZES: *Twin 39" x 75" extra-long 39" x 80" Full 54" x 75" Queen 60" x 80"*

# Murphy Panel /Wall Bed sizes

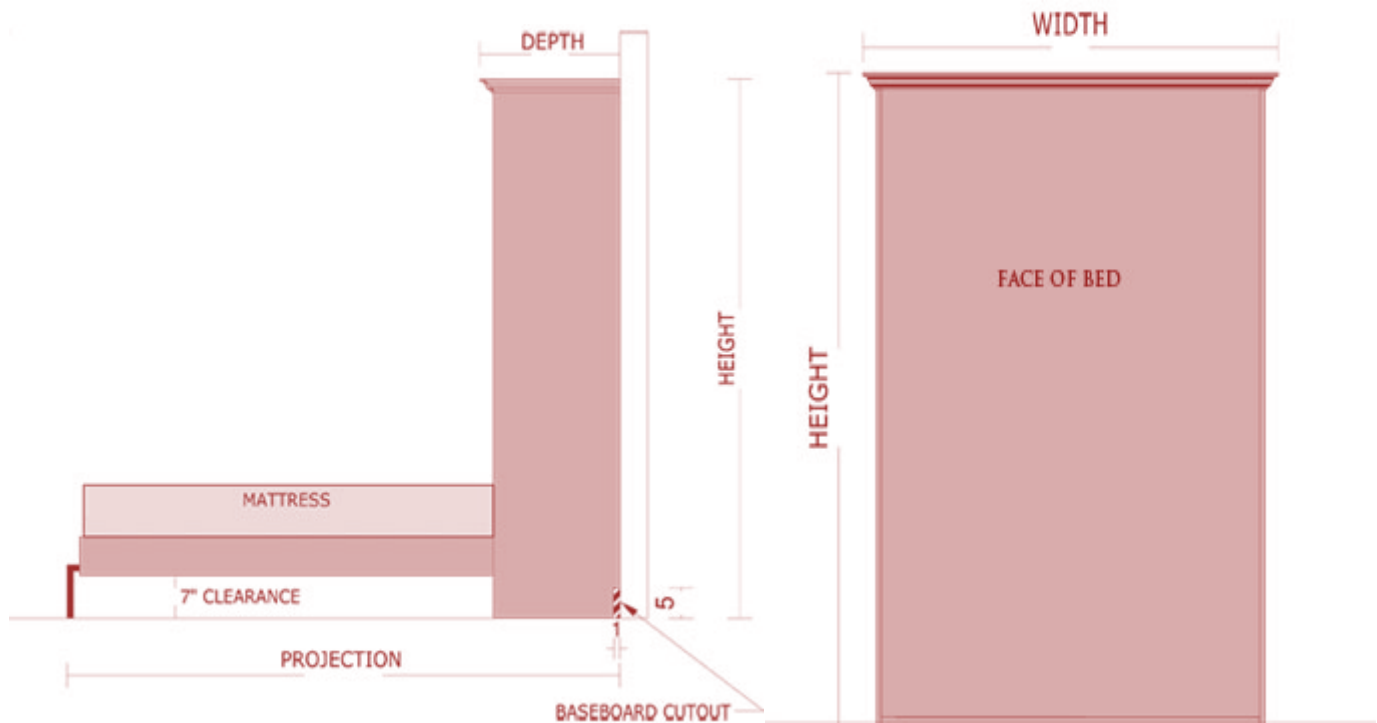
Murphy Panel or Wall Beds as they are often called, differ from Bi-Fold door beds because the whole front door lowers down like a drawbridge, and becomes the surface for the mattress.

This style be is attached to the wall and no drilling into the floor is necessary.

Wher as the Bi-Fold Murphy Bed has doors that fold open, and out to each sidelike your Bi-Fold closet doors.

The metal bed frame attaches to the floor, The Bi-Fold frame can be mounted to the wall using a floor saver (optional at additional cost).

The Bi-Fold cabinet itself is also attached to the wall.



Size	Height	Width	Depth	Projection into room when bed is down
Vertical Queen	90"	65 ½"	20 ¾" or 15 ¾"	89 ½" to 94"
Vertical Full	85"	59 ½"	20 ¾" or 15 ¾"	89 ½"
Vertical Twin	85"	44 ½"	20 ¾" or 15 ¾"	89 ½"
Side Mount Queen	70 ¾"	85"	15 ¾"	69 ½"
Side Mount Full	64 ⅝"	79 ⅞"	15 ¾"	63 ½"
Side Mount Twin	47 ⅝"	79 ⅞"	15 ¾"	46 ½"

**PLEASE SEE INSERTS FOR NEWER PRODUCTS**

Murphy Beds are a separate unit from any of the side cabinets so you can have what you want to get the room that you need.



OFFICE BY DAY



BEDROOM BY NIGHT



LIBRARY BY DAY



BED BY NIGHT



PIVOT BED CLOSED



PIVOT BED OPEN



SIDE MOUNT BED CLOSED



SIDE MOUNT BED OPEN



OFFICE PANEL BED



OFFICE PANEL BED OPEN



TWIN BEDS CLOSED



TWIN BEDS OPEN



BED OVER SOFA JUST REMOVE CUSHIONS (SOFA IS ADDITIONAL COST)



# A GUY LIKES A NICE CLOSET, TOO



Take almost any closet space shared between a man and woman. The man's portion will likely take up one-third of the space, while the women dominate the rest.

Sure, we guys understand: You have more *stuff* than we do (despite hating 95 percent of it and only wanting to wear pajamas). But a guy still needs his own well-designed and organized space, too.

Our fashion collection may not be as massive as most women's, but it encompasses almost as many categories: jewelry (ties, cuff links, rings); accessories (belts, pocket squares, watches); bags (briefcase, knapsack); and, yes, shoes (work, play, exercise, summer, winter). And since you've made it clear that the bathroom floor, hallway floor, bedroom floor, desk chair and kitchen counter aren't appropriate storage options, it all needs to go somewhere.





**PRESENTS**

## THE **QUEEN SIZE** MURPHY BED SPECIAL

This bed comes with TWO side cabinets 15w x 85h x 15d each with a lower door and open adjustable shelves





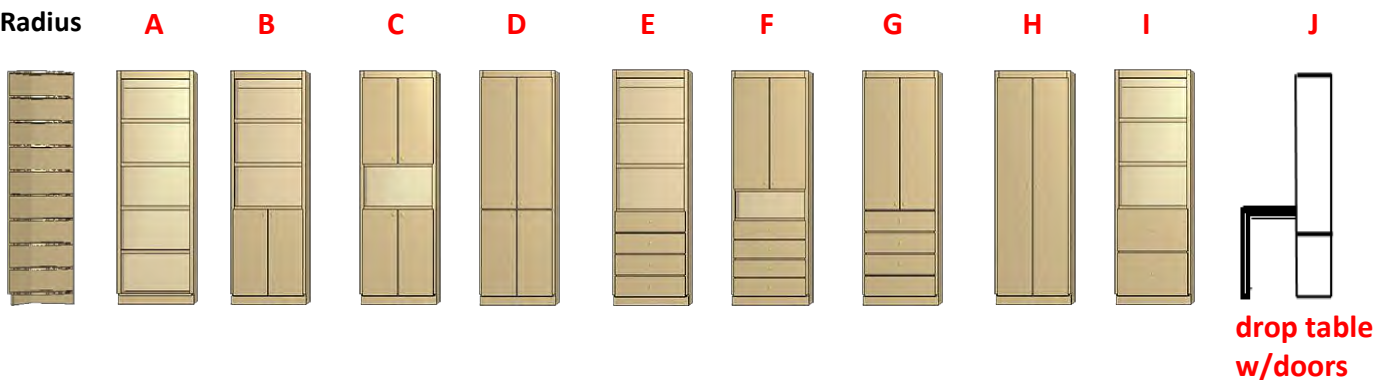
**TALL CABINETS**

ALL STANDARD TALL CABINETS ARE AVAILABLE 15", 18", 21", 24", 27" 30", 36" wide and 15" or 20" deep  
 TALL STANDARD CABINETS ARE AVAILABLE 85" OR 90" HIGH

TALL CABINETS ARE DEPICTED BELOW your choice **with backs or without backs.**

**30" WIDE CABINETS ARE DEPICTED BELOW ALL HAVE BACKS**

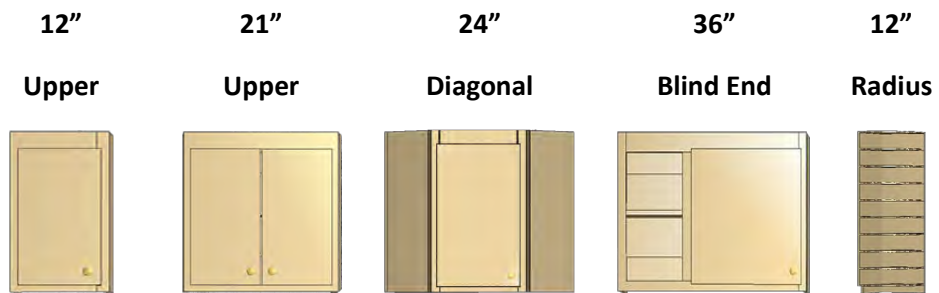
End Radius



**drop table  
w/doors**

**UPPER WALL CABINETS COMMONLY USED ABOVE DESKS**

ALL UPPER WALL CABINETS ARE AVAILABLE 12", 15", 18", 21", 24", 27" 30", 36" **WIDE**  
 ALL UPPER WALL CABINETS ARE AVAILABLE 24", 30" OR 36" **HIGH** ALL UPPER CABINETS ARE 12" **DEEP**  
 (Upper wall cabinets available *WITH OR WITHOUT DOORS* doors depicted below)



**DESK BASE CABINETS COMMONLY USED UNDER DESK TOP ARE 29" HIGH**  
**ALL DESK CABINETS ARE 15" 18", 21", 24", 30", 36" WIDE**



WE HAVE MORE STYLES AND COLORS THAN SHOWN

## CHOOSE YOUR DOOR STYLE



*Flat Square Edge*



*Bimini Raised Panel*



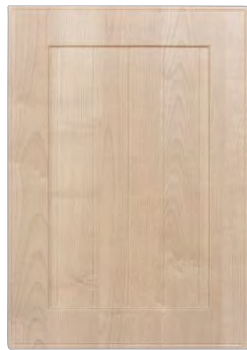
*Isle Morada Raised Panel*



*Daytona Raised Panel*



*Shaker Abaco*



*Shaker Naples*



*Shaker Sarasota*

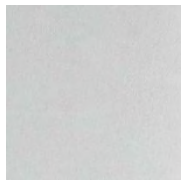


*Crown Molding Profile*

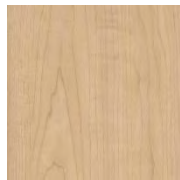
### SOLID COLORS AS WELL AS TEXTURES



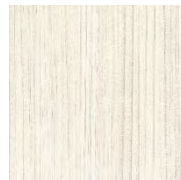
Fog Grey



Folkstone Grey



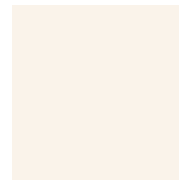
Hardrock Maple



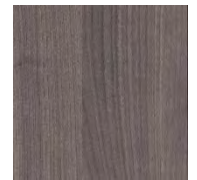
White Havana



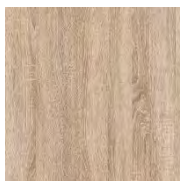
Grey Beige



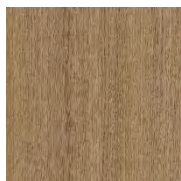
Bisque



Hudson Cherry



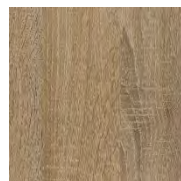
Marseille



Charleston Oak



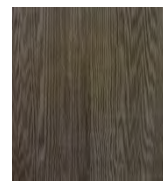
Carolina Oak



Monaco



Moscato



Milano



Tenino Grey

COLORS ARE REPRESENTATIVE PHOTOS AND SHOULD BE USED AS A REFERENCE ONLY

**PLEASE NOTE! COLORS DO OCCASIONALLY CHANGE, PLEASE CALL TO SEE IF YOUR COLOR IS AVAILABLE**

**Visit our website at [www.millersmurphybeds.com](http://www.millersmurphybeds.com) to see more door styles, colors, and combinations!**